



TECH GUIDE

PRESENTED TO YOU BY **HUSTLE** PRO CYCLING

**TUSSLE**  
WITH THE HUSTLE



HUSTLE PRO CYCLING PRESENTS TUSSE WITH THE HUSTLE  
BRINGING BACK BIKE RACING TO TORONTO PROUD TO BE A FAMILY FRIENDLY EVENT  
ALL RACE CATEGORIES PLUS FIXED GEAR CRITERIUM

COMING SOON

JULY 6 2024



## GENERAL INFORMATION

**Location:** Downsview Airport - please refer to Parking/Entrance below for specific GPS coordinates for drivers and pedestrians.

**Course:** This unprecedented and iconic course will find racers competing on the Downsview Airport tarmac. The loop itself is 1.2km in length with 4 meters of elevation per lap and will feature one highly technical turn after the start/finish.

**Parking/Entrance:** Parking is available in the parking lot just outside of the airport (map on page 5).

Cars are to enter via Hanover Road, North York (43.738609, -79.465662).

Parking is available at the corner of Beffort Rd and Hanover Rd (address for GPS is 3 Hanover Rd, North York) with access to the site being just east and south on Beffort Rd. A volunteer will be there to direct you.

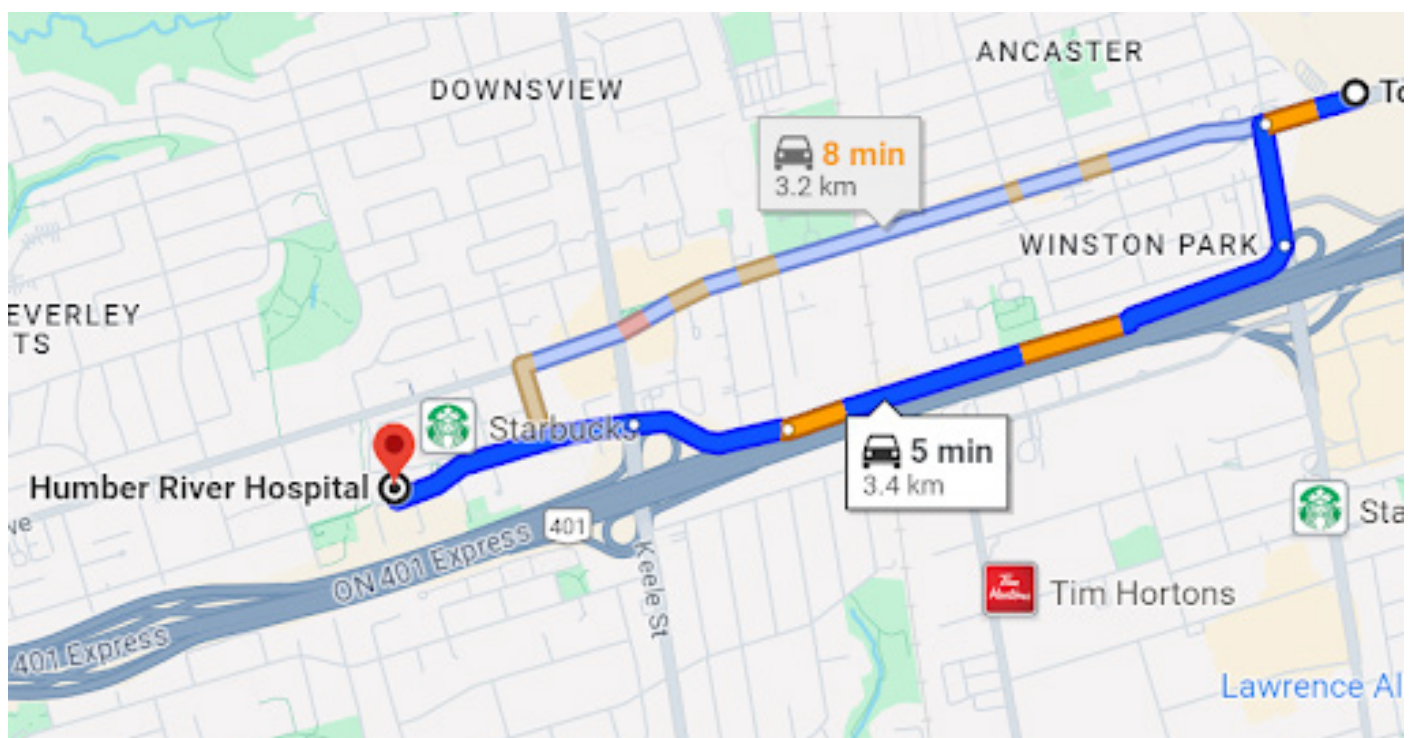
Those coming by transit will exit at Wilson Station and walk west along Wilson Ave. A pedestrian access gate is on the north side of Wilson before reaching Dufferin St.

**Pre-Riding:** There is no pre-riding allowed on the day of the race or any day prior to the race.

**Warming Up:** Riders are encouraged to bring rollers or trainers for warming up.

**Questions:** Please read the tech guide thoroughly and direct any questions to Greg Rawson (greg@performancedrivenevents.com) or Hustle Pro Cycling (info@hustleprocycling.ca).

## EVENT SAFETY & HOSPITAL LOCATION



- First aid will be provided by Odyssey Medical who will be located under a tent near the start / finish area.
- For your safety, if you withdraw from the event for any reason, you must inform the nearest Commissaire that you will no longer be racing. Riders not reporting to the Commissaire may be subject to a fine.
- Riders are required to wear an approved, regulation cycling helmet at all times while riding their bike.
- Should a Commissaire or OC representative feel that a rider is unfit to race for any reason, the OC reserves the right to remove the rider from the event, for their own safety and the safety of others.
- Spectators should be aware of the start/finish line area and are asked to be vigilant at all times.
- Course marshals will be placed around the course for added safety.

## REGISTRATION/SIGN IN INFORMATION

Criterion	Fixed Gear Criterion	Youth/Kids Race
<b>Before June 15th at midnight - \$75</b> Inclusive of CCN fees	<b>Before June 15th at midnight - \$35</b>	<b>\$5.00</b>
<b>After June 15th - \$85</b> Inclusive of CCN fees	<b>After June 15th - \$45</b>	<b>\$5.00</b>

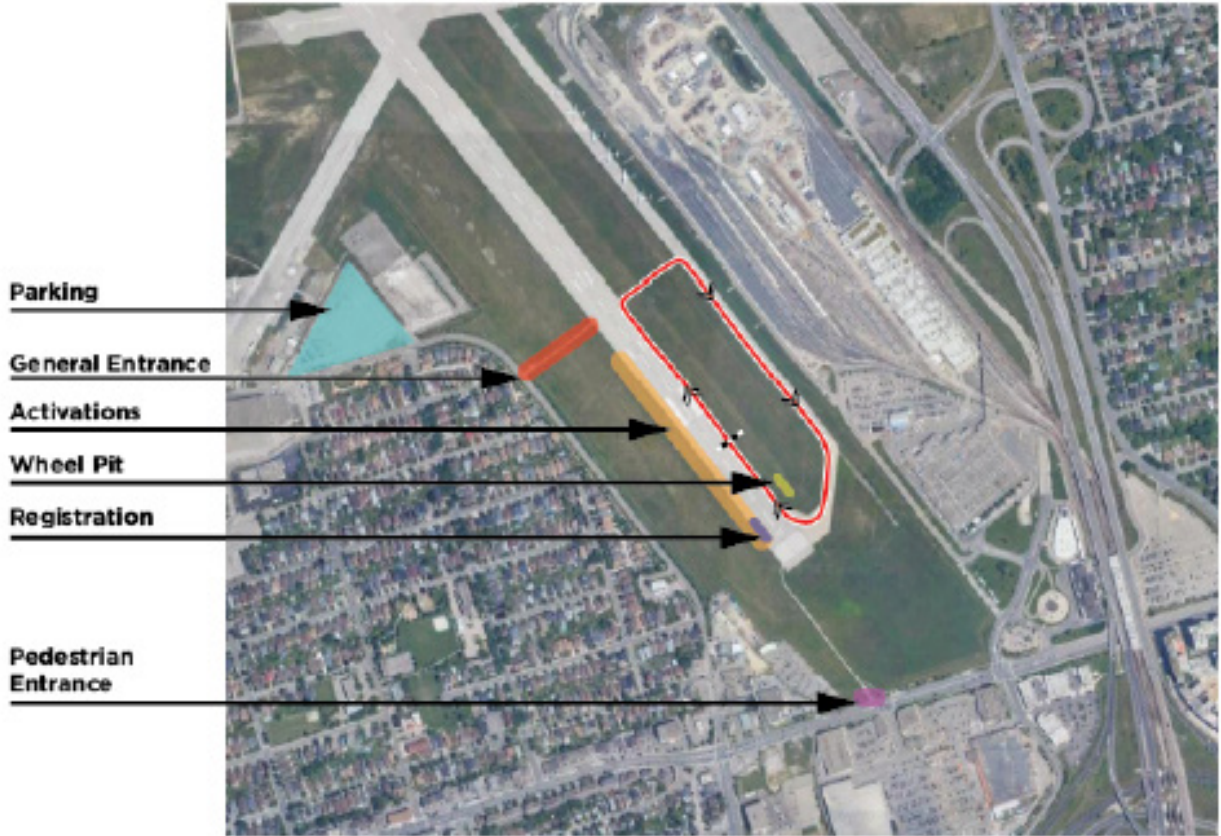
- Registration is available online at CCN.
- No day of registration.
- All riders must sign in at least 30 minutes before their scheduled race. Refer to the map below for sign in location.
- All participants must have a minimum challenge level membership. Racers participating in Cat A, Cat B, and Cat A Women must have a Compete or UCI license (youth are exempt).
- The above prices include all CCN fees.
- New for 2024 participants in the 2024 Winspace Ontario Criterium Series, at the discretion of the event organizer, will have the option to sign up and race in up to two races at each event.
- Winspace Ontario Crit Series points collected in a category are non-transferable and may not be combined between categories. Only points earned in one event category may be applied to the overall series standings. Participants will need to have the right level of licensing to compete depending on their category selection.
- For example:
  - 54-year-old male Category C racer may opt to race both the Cat C/D race as well as the following Master race.
  - Female rider that could race in the general Category C/D race then race in the women's only event later
- Please note that there will be no day of registration for additional races and refunds will not be given if a rider decides not to race either of the two events.
- Discounts offered for registration in a second event is at the organizer's discretion.
- The Race Organizer reserves the right to combine categories if there are low participation numbers in either the Criterium or Fixed Gear races. Results will be broken out for awards.

## RACE SCHEDULE

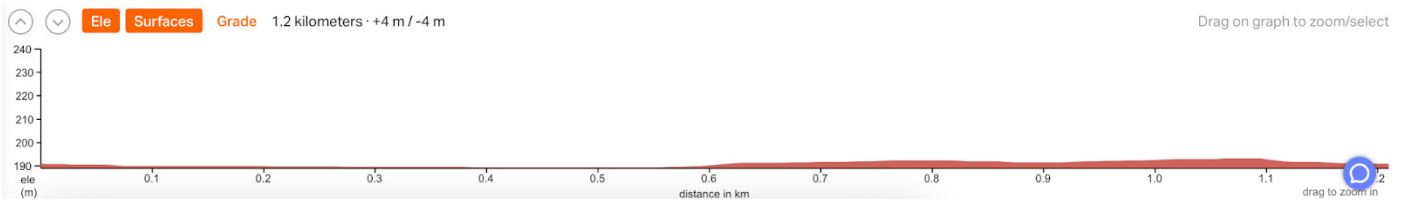
Category	Length	Start Time
<b>C/D +Master Men</b>	50min	10:00 AM
<b>B</b>	60min	11:00 AM
<b>Youth/Kids Races</b>		
<b>Race 1: 3-8yr olds Fun Ride</b>	100m	12:15 PM-12:30 PM
<b>Race 2: 9-11 yrs</b>	3 laps	12:30 PM-12:45 PM
<b>Race 3: 12-15yrs</b> <i>Male &amp; female will be placed accordingly</i>	5 laps	12:45 PM-1:15 PM
<b>Breakfast Club of Canada</b> <i>Special presentation</i>		1:15 PM
<b>Women Pro A/B &amp; Master</b>	60min	1:30 PM
<b>Fixed Gear Open &amp; Women+ Pro Fixed Gear Men</b> <i>Will be placed accordingly</i>	45min	2:45 PM
<b>A / Pro</b>	75min	4:00 PM

# SITE & COURSE MAP

## SITE MAP



## COURSE ELEVATION



## RIDE WITH GPS LINK

<https://ridewithgps.com/routes/45877993>

## NUMBER PLACEMENT

- See image for bib number placement for the race
- Bib numbers must be visible at all times



## YOUTH RACES

- Helmets are mandatory.
- Any bicycle type is acceptable.
- Please arrive before 12:00 PM to give you time to sign in, put on your number and timing chip (excluding 3-5 yr olds).
- Be in the race waiting area ready to go 10 minutes before your race timing. Volunteers will help organize
- staging.

## AWARDS

- Medals will be awarded to the top three (3) finishers in each category. All are expected to wear their full competition uniform for photos.
- Should categories be combined because of low participation numbers, results will be broken out for awards. Awards will be awarded based on the results of each category separated.
- Riders must attend the awards ceremonies or risk forfeiting their awards.
- Riders must wear their competition wear for medal presentations. Jeans, streetwear and sunglasses are prohibited.
- Medal presentations will take place following the conclusion of each race.

# WINSPACE ONTARIO CRIT SERIES POINTS

The breakdown of points is as follows for each category:

Placing	Points
1st	25
2nd	20
3rd	16
4th	13
5th	11
6th	10
7th	9
8th	8
9th	7
10th	6
11th	5
12th	4
13th	3
14th	2
15th	1



# Criterion Races

## EQUIPMENT:

- From April 1, 2024 the UCI regulation (1.3.022) will be amended with a clear requirement that brake levers must have a maximum inclination of 10 (ten) degrees. We will be requiring riders in Ontario to follow this updated regulation at all road events this year.
- The wearing of an approved helmet is mandatory. UCI Rule 1.3.018 states that: Only wheel designs granted prior approval by the UCI may be used.
- Only standard handlebars are permitted. Handlebar extensions, including time-trial bar extensions or other types of tri-bars, are not permitted. Only bicycles conforming to UCI rules 1.3.001 - 1.3.025 are permitted for use.

## GENERAL EVENT RULES AND REGULATIONS:

- The races will be held under the rules of the UCI with CC and OC modifications.
- The CC & OC rules are available on-line at: [www.ontariocycling.org/commissaires/commissaires-rules/](http://www.ontariocycling.org/commissaires/commissaires-rules/)
- The penalty scale of the Ontario Cycling rule book will be applicable.
- Registration closes 30 minutes before the start of each race.
- All riders must sign in at registration.
- U.S. riders must present a UCI licence in order to enter this event. USAC Domestic Licences are not allowed in Canada.
- All foreign licensed riders other than U.S. riders must produce a letter of permission from their country's federation.
- Races will start promptly at the indicated start times.
- There will not be a team managers meeting.
- There will not be any team vehicles or coach/parent ride-a longs permitted on the course.
- Any rider dropping out of the race shall immediately notify a commissaire.
- Awards will be presented according to the published schedule. Top-3 finishers are required to attend award presentations or risk forfeiting their awards. Riders must wear their competition wear for the presentation.
- Race is on private property and will be held completely on private, closed roads. Marshalls will be stationed at corners.
- In case of lightning, the race may be delayed or cancelled. If you are informed that the race has been stopped due to lightning, you are advised to seek shelter until the race can resume. No refunds will be issued.
- For your safety, if you withdraw from the event for any reason, you must inform the nearest Commissaire that you are no longer racing. Any unreported DNF may result in a severe penalty.
- You are required to wear an approved, regulation cycling helmet at all times while astride your bike, from the moment you arrive at the race until you leave. Non-compliance may result in a severe penalty.
- Race results will be posted at [racetiming.ca](http://racetiming.ca)
- As this is a criterium race, riders will be given free laps for mishaps (e.g. crashes and punctures). Improperly maintained bicycles resulting in equipment failure is not considered a mishap. Riders suffering mishaps shall head to the designated pit area via any means other than travelling backwards on the course, report to the Commissaire, and make repairs. At the direction of the Commissaire only, riders will be allowed to resume the race at the same location in the pack where they had their mishap.

## criterium Races – Fixed Gear

### EQUIPMENT:

- All equipment must be in good working condition and is subject to the discretion of the Race Organizer.
- Purpose built track frames are mandatory. No converted road frames are allowed.
- Drop bars with bar tape and plugged ends are required.
- No brakes, levers or hoods are to be installed on bars.
- A lock-ring installed securing the cog is required.
- Chain, cogs and chainrings must all be 1/8" pitch and in good condition.
- Traditionally spoked wheels are required. No carbon tri-spoke, 4 & 5-spoke or disk wheels are permitted. Aero rims are permitted, with traditional spokes and lacing and not to exceed 100mm in depth.
- Road tyres are required. Tubular tires must be properly glued (no taping allowed) prior to the event.
- The rider must be able to safely slow their bike at all times.
- Gearing will be at the discretion of the Race Organizer. Riders are encouraged to race smaller gears if unsure, and to have other options on hand if required by the tech inspector. Race Organizers will not have gears on hand, and reserve the right to enforce gear restrictions on the day of the event if deemed necessary for safety.
- Road style clipless pedals and shoes are required. Flat pedals and toe straps are prohibited.
- Approved helmet to be worn at all times when riding. No aero TT helmets permitted.
- Proper cycling attire is to be worn which includes spandex and cycling jersey.

## **GENERAL EVENT RULES & REGULATIONS - FIXED GEAR**

- Athletes must sign in 30 minutes prior to the start of their race.
- Athletes must start with one foot on the ground. Track stands are not permitted.
- Athletes are not permitted to lean on another athlete or the barriers.
- After a (1) minute warning athletes will be given a (15) second warning. The race may be started at any time during the final (15) seconds on the race director's command.
- Each race will be a set amount of time plus an additional 5 laps. The amount of time will be communicated before the race start.
- A lap counter is used to signify how much time or laps remain.
- The length of the race is subject to change at any time per the race director's discretion.
- A bell is used to signify the start of the last lap.
- There are NO free laps for mechanicals or crashes.
- Athletes must exit the circuit before they are lapped.
- When the sweeper moto approaches from behind, athletes must exit the course as soon as possible.
- Athletes must exit the circuit in a safe and controlled manner.
- Course officials may signal to athletes that they must exit the course.
- Athletes refusing to exit the circuit will be disqualified and penalized.
- If a solo rider is about to lap the field, the first chase group may be allowed (at the race director's discretion) to complete the race. The chase group will be shown the green flag at the course exit and finish line to signal they are allowed to continue racing.
- If the first chase group is allowed to finish the leader will not be permitted to join or pass the chase group. The leader will remain behind the lead moto for the remainder of the race.
- If the first chase group is approached from behind by the leader with more than 3 laps remaining the race director may shorten the race distance and will present the chase group with a minimum of 3 laps to go. Any change in laps will be shown on the lap counter and announced.
- If the race must be stopped for any reason, the race organizer will warn athletes by displaying the red flag around the circuit and Athletes must line-up before the start/finish line.
- Efforts will be made to reestablish gaps between groups on the lap before the red flag incident.
- Athletes who are clearly the cause of the red flag will not be allowed to restart. This will be determined at the Race Organizers discretion based on available information.
- Any rider dropping out of the race shall immediately notify the Race Organizers.
- The prize list will be displayed at registration. Additional primes may be announced on the start line.
- Awards will be presented following all Fixed Gear events. Top-3 finishers are required to attend award presentations in full competition wear or risk forfeiting their awards. No jeans, sunglasses or street clothes.